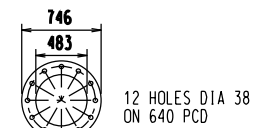
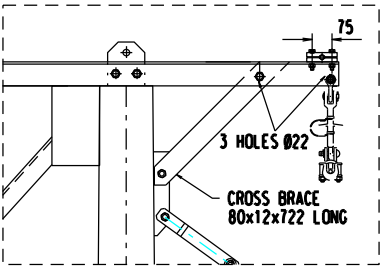


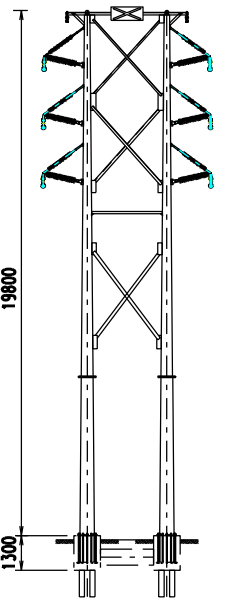
ESKOM DRG No. 0,69/258C
 ESKOM PRETORIA DRG No. 2-WT/922 SHT 1 OF 3.
 TOWER MANUFACTURER: DORBYL VEREENIGING.
 CONDUCTOR - "TWIN BUNTING" ACSR
 EARTHWIRE - 7/3,35 STEEL.
 NOMINAL ATTACHMENT HEIGHT - 13,3m.
 EXTENSION INCREMENTS 1,0m.
 NOMINAL TOTAL LENGTH 22,3m.
 NOMINAL PLANTING DEPTH 2,5m



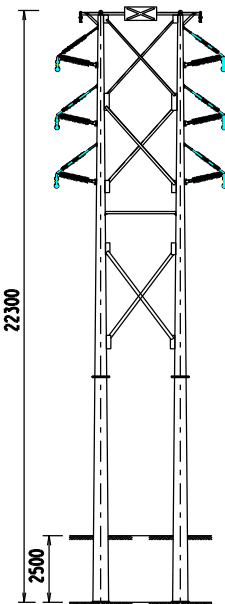
BASEPLATE 40mm THICK



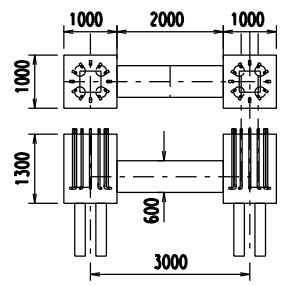
DETAIL



FRONT VIEW
CONCRETE FOUNDATION



FRONT VIEW
PLANTED POLES



CONCRETE FOUNDATION DETAILS

NOTE:
 1 USE STEWART SCOTT
 INTERNATIONAL DRG IS169518/E04

2-WT/ 91654	TWIN BUNTING STRAIN ASSEMBLY
2-WT/ 91653	CONDUCTOR SUSPENSION ASSEMBLY
2-WT/ 91652	EARTH WIRE ARRANGEMENT
2-WT/ 91651	132kV D/CIRC. SUSPENSION G A.
DRG NO.	REFERENCE DRAWINGS:

				/ /	
1	FOUNDATION DETAILS ADDED.	JLR	JJ J	22/11/2004	
REV	REVISION DESCRIPTION	BY	CHKD	DATE	PROJECT NO.



132kV DOUBLE CIRCUIT
 TWIN BUNTING CONDUCTOR
 SUSPENSION STRUCTURE (258C)
 GENERAL ARRANGEMENT

AUTH:
 DATE: / /
 CHKD:
 DATE: / /
 DRAWN: J LE ROUX
 DATE: / /

2-WT/916

SET	SHEET	REVISION
-	1	1

SCALE : NTS
 THIS DRAWING IS THE
 PROPERTY OF ESKOM